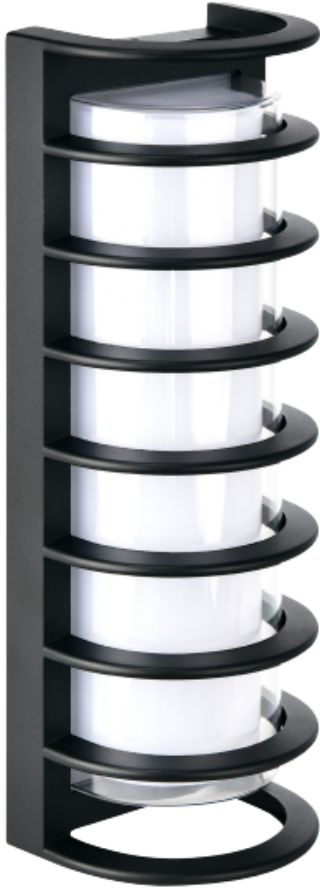


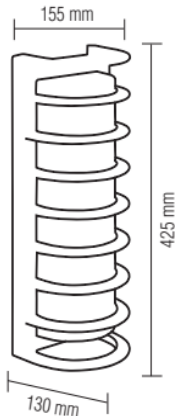
LED GARDEN LAMP

Product&Family Code: 076 078 0030

LUXIA-G



Technical Drawing



Technical Data

| | |
|---|--------------------|
| Voltage (V) | 85-265V |
| Product Wattage (W) | 30 |
| Equivalence with incandescent lamp(W) | 240 |
| Colour Render Index (Ra) | >Ra70 |
| Colour Temperature (K) | 4200K |
| Materials | ALUMINIUM, PC |
| Protection Class | I |
| Dimmable | No |
| EEI | - |
| Warm-up time up to 60 %of the full light output | Instant Full Light |
| Luminous Flux (lm) | 2700 |
| Luminous Efficacy (lm/W) | 90 |
| Rated Life (hrs) ⌚ | 30.000 |
| IP Rating | 54 |
| Power Factor | >0.5 |
| Beam Angle | 120° |
| Starting Time | <0.2s |
| Number of ON-OFF cycling | x15.000 |

Applications



- Designed Outdoor Applications: Hotel, home lighting, recreation place, supermarket, office building.

Features

- High Lumen and CRI, Good quality & Constant Current driver.
- High heat dissipation, low carbon and environmental protection.
- SMD LED Lamp Base.
- Innovative Design of Assembly Structure

