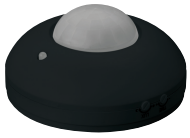


# PIR SENSOR

Product&amp;Family Code: 088 001 0001

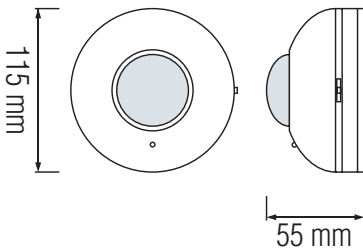
FOCUS



WHITE

BLACK

## Technical Drawing



## Technical Data

Voltage	AC 220-240V / 50-60Hz
Detection Distance	8 ± 1 m Max. (<24°C)
Time-delay	5 sec ~ 10±2 min.
Ambient Light	< 10Lux ~ 2000Lux
Average Load	Max 1000W (~220V AC)
Protection Class	II
IP Rating	20
Detection Motion Speed	0,6-1,5 m/s
Material	Plastic
CE Approved	Yes

## Applications

- For use indoors

## Features

- A passive infrared sensor (PIR sensor) is an electronic sensor that measures infrared (IR) light radiating from objects in its field of view.
- The wide detection range senses an up, down, left and right field of motion.
- It works by seeing human body heat in motion via infrared rays.

